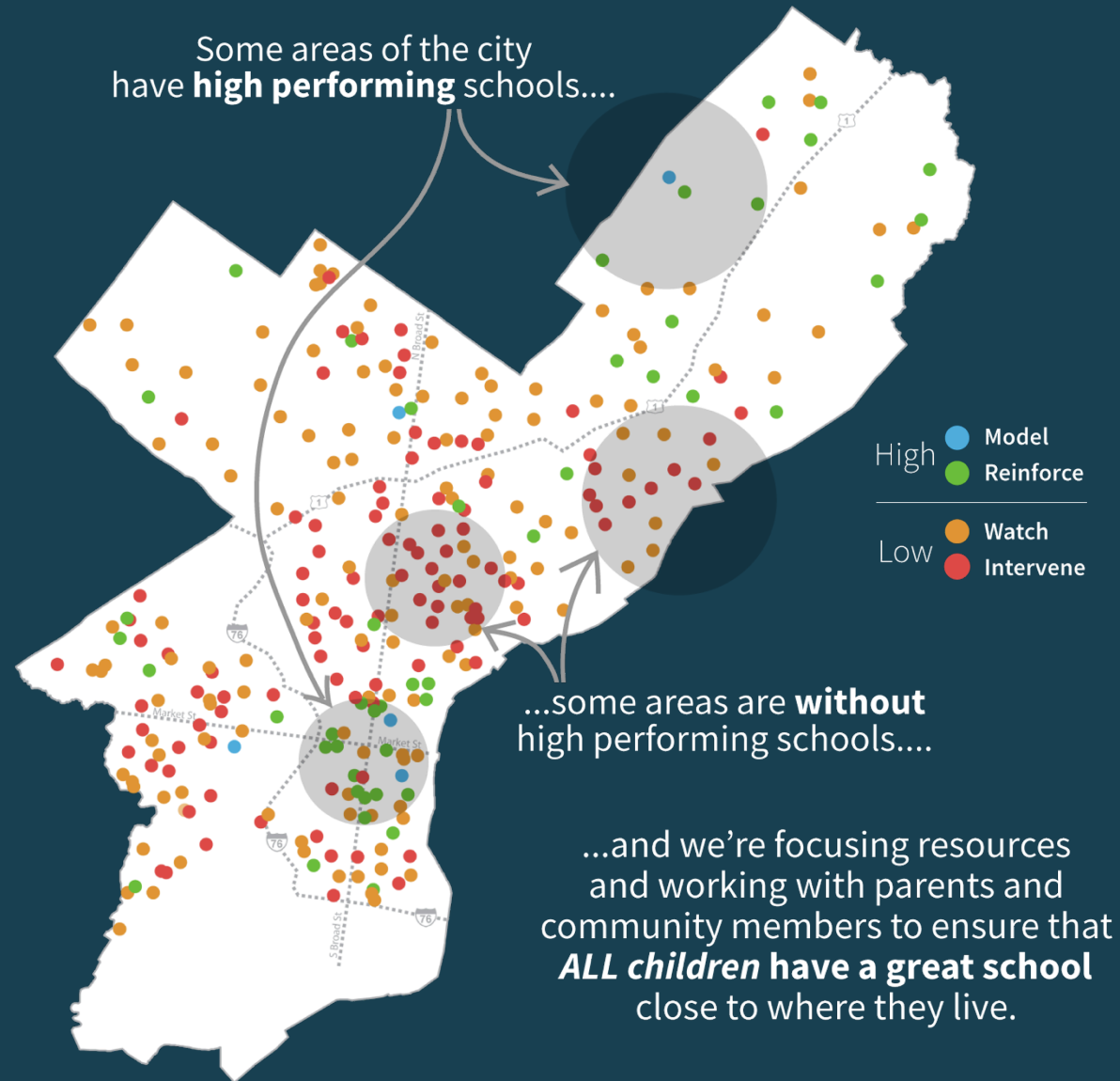


# Feedback and Findings Meeting

## McDaniel Elementary School

*December 8, 2016*

# All children deserve a **great school** close to where they live.





## Agenda

- Why We're Here
- School Quality Review Findings
- Stakeholder Feedback
- Additional Ideas
- Next Steps



# Why is my school being considered?

## McDaniel Elementary School

### SPR

3-year SPR trend

2012-13 2013-14 2014-15



3-year SPR average

**15**

### Key Data

2014-15 Performance

Reading Achievement\*

12%

Math Achievement\*

3%

Attendance  
≥ 95% days

25%

4

\* School Year 2014-15 performance for achievement equals the percentage of students scoring proficient or advanced on the English language arts and math PSSA exams



# School Quality Review

## Purpose:

- Identify main factors that support student learning
- Identify main factors that limit student learning

## IMPACT

- Cause and effect



# School Quality Review

## Process:

- Rubric: 5 Domains
  - Quality of Learning and Teaching
  - Curriculum and Assessment
  - Leadership, Management, and Accountability
  - Culture of Learning
  - Family and Community Engagement (FACE)



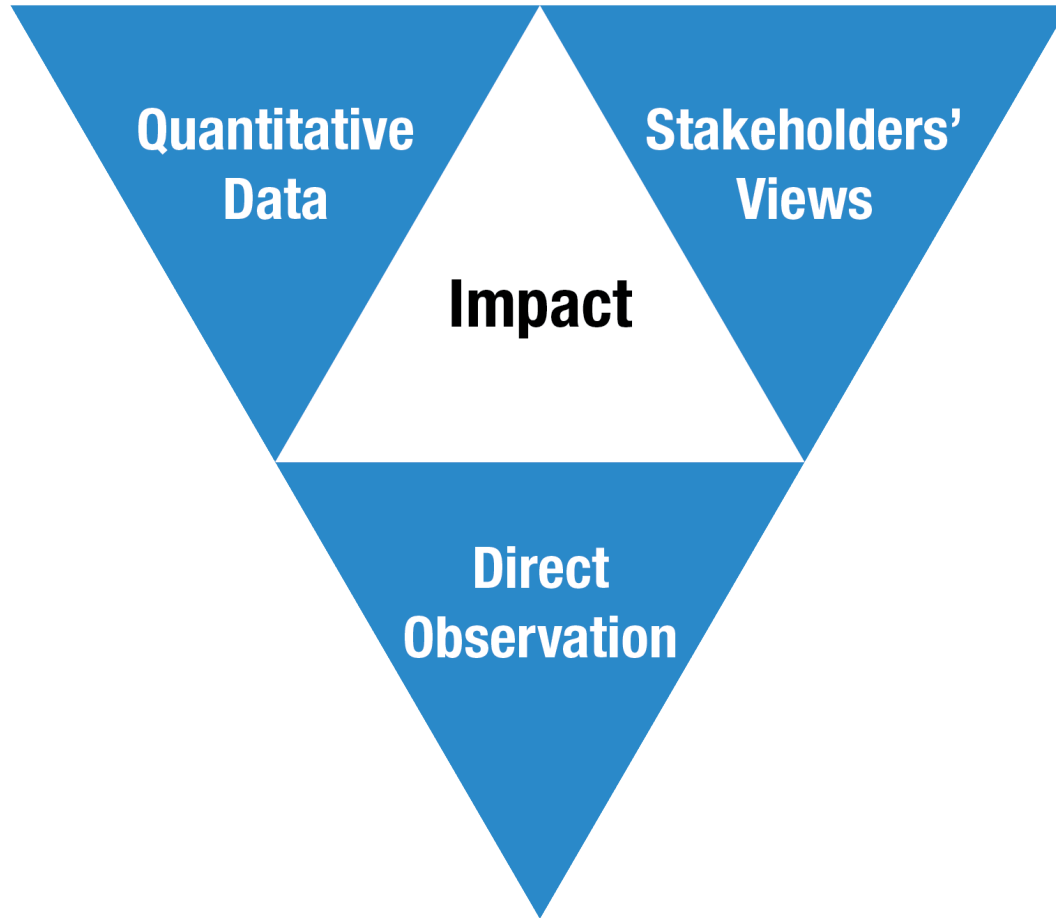
# School Quality Review

## Evidence:

- Actions by adults or students
- Statements or questions by adults or students
- Observable features of the classrooms or school
- Documentation



# School Quality Review







# School Quality Review

## Factors that support learning:

- **Most students have a positive feeling about McDaniel**
  - The school climate is calmer and most students report that they like coming to school.
  - Students can identify at least one adult they can go to if they need help.
  - “School is fun.” - student
  - “My daughter likes school this year. She cries if she can’t come to school.”- parent
  
- **Teachers provide a network of support for each other**
  - Teachers share instructional strategies, welcome new teachers, and work together to address repetitive student misconduct.
  
- **A group of parents are working in collaboration with the principal to improve communication**
  - A core group of parents are working together to create a Facebook page for the school. They are also discussing other forms of social media that can be best used to reach more parents.



# School Quality Review

## Factors that support learning:

- Purchase of new technology resources for students and teachers
- New smartboards and laptop carts for all classrooms. Administrators and teachers are closely monitoring Lexia reading program to track student progress.



# School Quality Review

## Factors that limit learning:

- **Division of resources between two campuses**
  - The two campuses share resources including security, a counselor, and the nurse. As a result, there are not always adults on campus who are trained to deal with specific issues students are experiencing. Materials needed by the primary school are often located at the main building and not easily accessible. In some cases, only enough supplies for one building are provided.
  
- **Student behavior is improving, but remains problematic**
  - Although the school has implemented PBIS and there is some improvement in school climate, significant disruptive behaviors by some students continue to interfere with learning and sometimes make students feel unsafe.
  
- **Lack of rigorous instruction**
  - Data is not consistently and effectively used to match instruction to students' needs. Most questions posed to students are low cognitive levels. Activities/tasks assigned to students do not involve critical thinking, complex problem solving. Most lessons are teacher focused and do not use engaging strategies that motivate and interest students in learning.



# Stakeholder Feedback



# Stakeholder Feedback

## The process included:

- Student Focus Group
- Staff Focus Group
- Parent and Community Focus Groups
- Community Canvassing
- Community Partners Survey



# Stakeholder Feedback

## Things people like about the school:

- Administrators are guiding the school in the right direction.

→ “The school is heading in the right direction.” - parent

- Some teachers have good relationships with the students.

→ “I like my teacher.”- student

- Parents like the Lexia program.

→ “I know my child’s reading progress because of the information I get from Lexia.”  
- parent



# Stakeholder Feedback

## Things people like would like to change about the school:

- **Sharing resources between two campuses is problematic.**
  - “Having two school locations is hard. The schools share resources, and there isn’t enough for both schools.” - parent
- **Gifted students are not challenged.**
  - “My son gets bored in class and then acts out. He gets his work done quickly and then has nothing to do. ” – parent



# Stakeholder Feedback

## Things people would like to change about the school:

- **Safety is a concern inside and outside the school.**
  - “During pickup, cars block the view of other parents.” - parent
  - “Students from the other building (upper grades) gather in front of the primary school and pick on little kids.”- parent
  - Students are seen wandering the hallways and stairwells without supervision.





# Stakeholder Feedback

## Stakeholder ideas for improvement:

- Fund the two campuses like two separate schools.
- Offer STEM programming
- Provide additional security.
- Provide support inside the school for disruptive students.
- Provide staff to allow the building to open at 8am in order to reduce chaos at opening.



# Stakeholder Feedback

## Other Feedback:

1. What else do you think would help improve students' academic performance?
2. What are other ways in which the school could involve parents and the community?



## Next Steps

**December**

**Dr. Hite, Assistant Superintendents,  
and other District leaders review**

- 1) Stakeholder feedback
- 2) Site visit results
- 3) School input
- 4) New data (SPR)

**February**

**Recommendations for improvement  
shared with community**

**March - June**

**SRC approvals as needed**